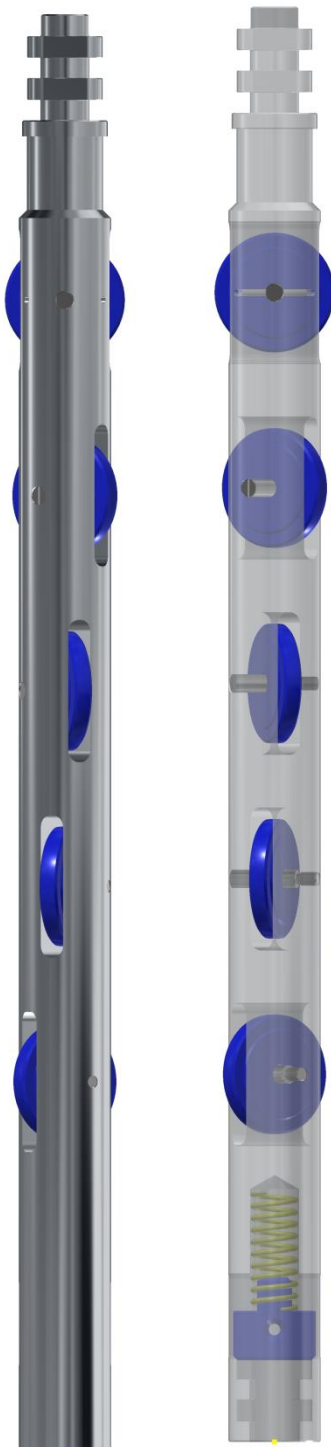


WL ROLLER STEM



The RMZ Wireline Roller stem is special type of stem used to assist upward and downward jarring forces where deviation in a well is encountered and jarring using traditional jars is unsuccessful. The WL Roller Stem is designed to substitute standard wireline stem and can be positioned along the length of the toolstring to lift the body and the weight of the string upon the axles of the Rollers incorporated within the Roller Stem. This eliminates any friction between the toolstring body and the tubing wall.

Application

- Low and high angle wireline operation

Features & Benefits

- Field re-dressable
- No welded parts
- Reduced friction
- Improved jar action
- Customized connection or roller diameter available to meet customer requirement.
- Tools for sour service (H2S) available upon customer request.

WL ROLLER STEM



Technical Specifications

OD	FISH NECK	QL	SR
1.50"	1.375"	1.50"	15/16"-10 UN
1.875"	1.75"	1.875"	1-1/16"-10 UN
2.125"	1.75"	1.875"	1-1/16"-10 UN
2.50"	2.312"	2.50"	1-9/16"-10 UN